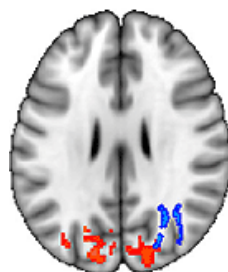


NEW HOT PAPERS > MARCH 2011

MARCH 2011

- SCIENCEWATCH HOME
- INSIDE THIS MONTH...
- INTERVIEWS
- SPECIAL TOPICS
- ANALYSES
- DATA & RANKINGS
- Sci-Bytes
- Fast Breaking Papers
- New Hot Papers**
- Emerging Research Fronts
- Fast Moving Fronts
- Research Front Maps
- Current Classics
- Top Topics
- Rising Stars
- New Entrants
- Country Profiles
- ABOUT SCIENCE WATCH



ScienceWatch.com has tracked the following New Hot Papers which had the highest percentage increase in citations in *Essential Science Indicators*SM from Thomson Reuters from the fifth bimonthly period of 2010 to the sixth bimonthly period of 2010, a total of 1,787 hot papers were identified, of which 1,192 (66.7%) were new.

Some papers have comments sent in by the author(s) of the paper which may include images and

descriptions of their work.

NEW HOT PAPERS FOR MARCH 2011

Field: Agricultural Sciences

Article Title: Assessing dietary intake in a population undergoing a rapid transition in diet and lifestyle: the Arctic Inuit in Nunavut, Canada

Authors: Sharma, S;Cao, X;Roache, C;Buchan, A;Reid, R;Gittelsohn, J

Journal: BRIT J NUTR

Volume: 103, Issue: 5, Page: 749-759, Year: MAR 14 2010

* Univ N Carolina Chapel Hill, Inst Nutr Res, 500 Laureate Way,Rm 4201, Kannapolis, NC 28081 USA.

* Univ Hawaii, Canc Res Ctr Hawaii, Program Epidemiol, Honolulu, HI 96813 USA.

* Govt Nunavut, Dept Hlth & Social Serv, Iqaluit, NU X0A 0H0, Canada.

* Community Wellness Ctr, Cambridge Bay, NU X0B 0C0, Canada.

* Johns Hopkins Univ, Bloomberg Sch Publ Hlth, Ctr Human Nutr, Baltimore, MD 21205 USA.

Field: Biology & Biochemistry



New Hot Paper Commentary:

[D. Neil Hayes & Katherine Hoadley Discuss Glioblastoma](#)

Article Title: Integrated Genomic Analysis Identifies Clinically Relevant Subtypes of Glioblastoma Characterized by

Abnormalities in PDGFRA, IDH1, EGFR, and NF1

Authors: Verhaak, RGW;Hoadley, KA;Purdom, E;Wang, V;Qi, Y;Wilkerson, MD;Miller, CR;Ding, L;Golub, T;Mesirov, JP;Alexe, G;Lawrence, M;O'Kelly, M;Tamayo, P;Weir, BA;Gabriel, S;Winckler, W;Gupta, S;Jakkula, L;Feiler, HS;Hodgson, JG;James, CD;Sarkaria, JN;Brennan, C;Kahn, A;Spellman, PT;Wilson, RK;Speed, TP;Gray, JW;Meyerson, M;Getz, G;Perou, CM;Hayes, DN;Canc Genome Atlas Res Network

Journal: CANCER CELL

Volume: 17, Issue: 1, Page: 98-110, Year: JAN 19 2010

* Univ N Carolina, Lineberger Comprehens Canc Ctr, Chapel Hill, NC 27599 USA.

* Univ N Carolina, Lineberger Comprehens Canc Ctr, Chapel Hill, NC 27599

NEW HOT PAPERS

- [New Hot Papers Home](#)
- [2011 Menu](#)

MORE PAPERS

- [Fast Breaking Papers](#)
- [Current Classics](#)

FEATURED IMAGE:

"...magnetic resonance imaging detects structural brain changes in the parietal lobe..." From the New Hot Paper commentary: [Jan Scholz Talks About Training the Brain.](#)

USA.

- * MIT, Eli & Edythe L Broad Inst, Cambridge, MA 02142 USA.
- * Harvard Univ, Cambridge, MA 02142 USA.
- * Dana Farber Canc Inst, Dept Med Oncol, Boston, MA 02115 USA.
- * Univ N Carolina, Dept Genet, Chapel Hill, NC 27599 USA.
- * Univ N Carolina, Div Med Oncol, Dept Internal Med, Chapel Hill, NC 27599 USA.
- * Univ N Carolina, Dept Pathol & Lab Med, Chapel Hill, NC 27599 USA.
- * Univ Calif Berkeley, Dept Stat, Berkeley, CA 94720 USA.
- * Univ Calif Berkeley, Grp Biostat, Berkeley, CA 94720 USA.
- * Washington Univ, Sch Med, Dept Genet, Genome Ctr, St Louis, MO 63108 USA.
- * Dana Farber Canc Inst, Ctr Canc Genome Discovery, Dept Pediat Oncol, Boston, MA 02115 USA.
- * Univ Calif Berkeley, Lawrence Berkeley Lab, Div Life Sci, Berkeley, CA 94720 USA.
- * Univ Calif San Francisco, Dept Neurol Surg, San Francisco, CA 94143 USA.
- * Mayo Clin, Dept Radiat Oncol, Rochester, MN 55905 USA.
- * Mem Sloan Kettering Canc Ctr, Dept Neurosurg, New York, NY 10065 USA.
- * SRI Int, Fairfax, VA 22033 USA.
- * Walter & Eliza Hall Inst Med Res, Parkville, Vic 3052, Australia.

Field: Chemistry

Article Title: publCIF: software for editing, validating and formatting crystallographic information files

Authors: Westrip, SP

Journal: J APPL CRYST

Volume: 43, Issue: , Page: :920-925, Year: Part 4 AUG 2010

* Walled Garden, Tech Serv, Iscoyd Pk, Iscoyd SY13 3AR, Shrops, England.

* Walled Garden, Tech Serv, Iscoyd SY13 3AR, Shrops, England.

Field: Clinical Medicine

Article Title: Advanced Heart Failure Treated with Continuous-Flow Left Ventricular Assist Device

Authors: Slaughter, MS;Rogers, JG;Milano, CA;Russell, SD;Conte, JV;Feldman, D;Sun, B;Tatooles, AJ;Delgado, RM;Long, JW;Wozniak, TC;Ghumman, W;Farrar, DJ;Frazier, OH;HeartMate II Investigators

Journal: N ENGL J MED

Volume: 361, Issue: 23, Page: 2241-2251, Year: DEC 3 2009

* Univ Louisville, Div Thorac & Cardiovasc Surg, 201 Abraham Flexner Way,Suite 1200, Louisville, KY 40202 USA.

* Advocate Christ Med Ctr, Oak Lawn, IL USA.

* Duke Univ, Med Ctr, Durham, NC USA.

* Johns Hopkins Univ Hosp, Baltimore, MD 21287 USA.

* Ohio State Univ, Columbus, OH 43210 USA.

* Texas Heart Inst, Houston, TX 77025 USA.

* Intermt Med Ctr, Salt Lake City, UT USA.

* Clarian Methodist Hosp, Indianapolis, IN USA.

* Thoratec, Pleasanton, CA USA.

Field: Computer Science

Article Title: Sense from sequence reads: methods for alignment and assembly

Authors: Flicek, P;Birney, E

Journal: NAT METHODS

Volume: 6, Issue: 11, Page: S6-S12, Year: Suppl. S NOV 2009

* European Bioinformat Inst, Wellcome Trust Genome Campus, Cambridge, England.

* European Bioinformat Inst, Cambridge, England.

Field: Economics & Business

Article Title: THE CONCEPTUAL MODEL OF CONSTRUCTION AND REAL

ESTATE NEGOTIATION

Authors: Urbanaviciene, V;Kaklauskas, A;Zavadskas, EK

Journal: INT J STRATEG PROP MANAG

Volume: 13, Issue: 1, Page: 53-70, Year: 2009

* Vilnius Gediminas Tech Univ, Dept Construct Econ & Property Management, Sauletekio Al 11, LT-10223 Vilnius, Lithuania.

* Vilnius Gediminas Tech Univ, Dept Construct Econ & Property Management, LT-10223 Vilnius, Lithuania.

* Vilnius Gediminas Tech Univ, Dept Construct Technol & Management, LT-10223 Vilnius, Lithuania.

Field: Engineering

Article Title: The Age of Multilevel Converters Arrives

Authors: Franquelo, LG;Rodriguez, J;Leon, JI;Kouro, S;Portillo, R;Prats, MAM

Journal: IEEE IND ELECTRON MAG

Volume: 2, Issue: 2, Page: 28-39, Year: JUN 2008

* Univ Seville, Dept Elect Engr, Seville, Spain.

* UTFSM, Dept Elect Engr, Valparaiso, Chile.

* Siemens Corp, Min Div, Santiago, Chile.

* Univ Seville, Power Elect Grp, Working R&D Projects, Seville, Spain.

* Univ Huelva, Dept Elect, Huelva, Spain.

Field: Environment/Ecology

Article Title: Exploring the likelihood and mechanism of a climate-change-induced dieback of the Amazon rainforest

Authors: Malhi, Y;Aragao, LEOC;Galbraith, D;Huntingford, C;Fisher, R;Zelazowski, P;Sitch, S;McSweeney, C;Meir, P

Journal: PROC NAT ACAD SCI USA

Volume: 106, Issue: 49, Page: 20610-20615, Year: DEC 8 2009

* Univ Oxford, Sch Geog & Environm, Environm Change Inst, S Parks Rd, Oxford OX1 3QY, England.

* Univ Oxford, Sch Geog & Environm, Environm Change Inst, Oxford OX1 3QY, England.

* Univ Edinburgh, Sch GeoSci, Edinburgh EH8 9XP, Midlothian, Scotland.

* Ctr Ecol & Hydrol, Wallingford OX10 8BB, Oxon, England.

* Univ Sheffield, Dept Anim & Plant Sci, Sheffield S10 2TN, S Yorkshire, England.

* Joint Ctr Hydrometeorol Res, Hadley Ctr, Met Off, Wallingford OX10 8BB, Oxon, England.

Field: Geosciences

Article Title: Trends in the sources and sinks of carbon dioxide

Authors: Le Quere, C;Raupach, MR;Canadell, JG;Marland, G;Bopp, L;Ciais, P;Conway, TJ;Doney, SC;Feely, RA;Foster, P;Friedlingstein, P;Gurney, K;Houghton, RA;House, JI;Huntingford, C;Levy, PE;Lomas, MR;Majkut, J;Metzl, N;Ometto, JP;Peters, GP;Prentice, IC;Randerson, JT;Running, SW;Sarmiento, JL;Schuster, U;Sitch, S;Takahashi, T;Viovy, N;van der Werf, GR;Woodward, FI

Journal: NAT GEOSCI

Volume: 2, Issue: 12, Page: 831-836, Year: DEC 2009

* Univ E Anglia, Sch Environm Sci, Norwich NR4 7TJ, Norfolk, England.

* Univ E Anglia, Sch Environm Sci, Norwich NR4 7TJ, Norfolk, England.

* British Antarctic Survey, Cambridge BC3 0ET, England.

* CSIRO Marine & Atmospher Res, Global Carbon Project, Canberra, ACT 2601, Australia.

* Oak Ridge Natl Lab, Carbon Dioxide Informat Anal Ctr, Oak Ridge, TN 37831 USA.

* UVSQ, CNRS, CEA, Lab Sci Climat & Environm,UMR 1572, F-91191 Gif Sur Yvette, France.

* NOAA, Earth Syst Res Lab, Boulder, CO 80305 USA.

* Woods Hole Oceanog Inst, Woods Hole, MA 02543 USA.

* NOAA, Pacific Marine Environm Lab, Seattle, WA 98115 USA.

- * Univ Bristol, Dept Earth Sci, QUEST, Bristol BS8 1RJ, Avon, England.
- * Purdue Univ, Dept Agron, W Lafayette, IN 47907 USA.
- * Purdue Univ, Dept Earth & Atmospher Sci, W Lafayette, IN 47907 USA.
- * Woods Hole Res Ctr, Falmouth, MA 02540 USA.
- * Ctr Ecol & Hydrol, Wallingford OX10 8BB, Oxon, England.
- * Ctr Ecol & Hydrol, Penicuik EH26 0QB, Midlothian, Scotland.
- * Univ Sheffield, Dept Anim & Plant Sci, Sheffield S10 2TH, S Yorkshire, England.
- * Princeton Univ, AOS Program, Princeton, NJ 08544 USA.
- * Univ Paris 06, Inst Pierre Simon Laplace, CNRS, LOCEAN IPSL, F-75252 Paris 5, France.
- * Inst Nacl Pesquisas Espaciais, BR-12227010 Sao Jose Dos Campos, SP, Brazil.
- * Ctr Int Climate & Environm Res Oslo, N-0318 Oslo, Norway.
- * Univ Calif Irvine, Dept Earth Syst Sci, Irvine, CA 92697 USA.
- * Univ Montana, Sch Forestry, Numer Terradynam Simulat Grp, Missoula, MT 59812 USA.
- * Univ Leeds, Sch Geog, Leeds LS2 9JT, W Yorkshire, England.
- * Columbia Univ, Lamont Doherty Earth Observ, New York, NY 10964 USA.
- * Vrije Univ Amsterdam, Fac Earth & Life Sci, NL-1081 HV Amsterdam, Netherlands.

Field: Immunology

Article Title: Development of Monocytes, Macrophages, and Dendritic Cells

Authors: Geissmann, F;Manz, MG;Jung, S;Sieweke, MH;Merad, M;Ley, K

Journal: SCIENCE

Volume: 327, Issue: 5966, Page: 656-661, Year: FEB 5 2010

- * Kings Coll London, Ctr Mol & Cellular Biol Inflamm, Div Immunol Infect & Inflammatory Dis, Great Maze Pond, London SE1 1UL, England.
- * Kings Coll London, Ctr Mol & Cellular Biol Inflamm, Div Immunol Infect & Inflammatory Dis, London SE1 1UL, England.
- * Univ Zurich Hosp, Dept Internal Med, Div Hematol, CH-8091 Zurich, Switzerland.
- * Weizmann Inst Sci, Dept Immunol, IL-76100 Rehovot, Israel.
- * Univ Aix Marseille, CIML, F-13288 Marseille 09, France.
- * INSERM, U631, F-13258 Marseille, France.
- * CNRS, UMR6102, Marseille, France.
- * Mt Sinai Sch Med, Icahn Med Inst, Inst Immunol, New York, NY 10029 USA.
- * Mt Sinai Sch Med, Dept Gene & Cell Med, New York, NY 10029 USA.
- * La Jolla Inst Allergy & Immunol, Div Inflamm Biol, La Jolla, CA 92037 USA.

Field: Materials Science

Article Title: Nanotube-Polymer Composites for Ultrafast Photonics

Authors: Hasan, T;Sun, ZP;Wang, FQ;Bonaccorso, F;Tan, PH;Rozhin, AG;Ferrari, AC

Journal: ADVAN MATER

Volume: 21, Issue: 38-39, Page: 3874-3899, Year: OCT 19 2009

- * Univ Cambridge, Dept Engn, 9 JJ Thomson Ave, Cambridge CB3 0FA, England.
- * Univ Cambridge, Dept Engn, Cambridge CB3 0FA, England.
- * SKLSM, Beijing 100083, Peoples R China.

Field: Mathematics

Article Title: EXISTENCE OF MINIMAL MODELS FOR VARIETIES OF LOG GENERAL TYPE

Authors: Birkar, C;Cascini, P;Hacon, CD;McKernan, J

Journal: J AMER MATH SOC

Volume: 23, Issue: 2, Page: 405-468, Year: APR 2010

- * Univ Cambridge, Ctr Math Sci, DPMMS, Wilberforce Rd, Cambridge CB3 0WB, England.
- * Univ Cambridge, Ctr Math Sci, DPMMS, Cambridge CB3 0WB, England.

- * Univ Calif Santa Barbara, Dept Math, Santa Barbara, CA 93106 USA.
- * Univ London Imperial Coll Sci Technol & Med, London SW7 2A2, England.
- * Univ Utah, Dept Math, Salt Lake City, UT 84112 USA.
- * MIT, Dept Math, Cambridge, MA 02139 USA.

Field: Microbiology

Article Title: Schistosomiasis and neglected tropical diseases: towards integrated and sustainable control and a word of caution

Authors: Utzinger, J;Raso, G;Brooker, S;de Savigny, D;Tanner, M;Ornbjerg, N;Singer, BH;N'Goran, EK

Journal: PARASITOLOGY

Volume: 136, Issue: 13, Page: 1859-1874, Year: NOV 2009

- * Swiss Trop Inst, Dept Publ Hlth & Epidemiol, CH-4002 Basel, Switzerland.
- * Swiss Trop Inst, Dept Publ Hlth & Epidemiol, CH-4002 Basel, Switzerland.
- * Univ Queensland, Sch Populat Hlth, Div Epidemiol & Social Med, Brisbane, Qld 4006, Australia.
- * Queensland Inst Med Res, Mol Parasitol Lab, Brisbane, Qld 4006, Australia.
- * Ctr Suisse Rech Sci, Abidjan 01, Cote Ivoire.
- * Univ London London Sch Hyg & Trop Med, Dept Infect & Trop Dis, London WC1E 7HT, England.
- * KEMRI Wellcome Trust Res Programme, Malaria Publ Hlth & Epidemiol Grp, Nairobi, Kenya.
- * Univ Copenhagen, Fac Life Sci, DBL Ctr Hlth Res & Dev, DK-1871 Frederiksberg C, Denmark.
- * Princeton Univ, Off Populat Res, Princeton, NJ 08544 USA.
- * Univ Abidjan Cocody, UFR Biosci, Abidjan 22, Cote Ivoire.

Field: Molecular Biology & Genetics

Article Title: Regulation Mechanisms and Signaling Pathways of Autophagy

Authors: He, CC;Klionsky, DJ

Journal: ANNU REV GENET

Volume: 43, Issue: , Page: :67-93, Year: 2009

- * Univ Michigan, Inst Life Sci, Ann Arbor, MI 48109 USA.
- * Univ Michigan, Inst Life Sci, Ann Arbor, MI 48109 USA.
- * Univ Michigan, Dept Mol Cellular & Dev Biol, Ann Arbor, MI 48109 USA.
- * Univ Michigan, Dept Biol Chem, Ann Arbor, MI 48109 USA.

Field: Multidisciplinary

Article Title: Computation for ChIP-seq and RNA-seq studies

Authors: Pepke, S;Wold, B;Mortazavi, A

Journal: NAT METHODS

Volume: 6, Issue: 11, Page: S22-S32, Year: Suppl. S NOV 2009

- * CALTECH, Ctr Adv Comp Res, Pasadena, CA 91125 USA.
- * CALTECH, Ctr Adv Comp Res, Pasadena, CA 91125 USA.
- * CALTECH, Div Biol, Pasadena, CA 91125 USA.



Field: Neuroscience & Behavior

New Hot Paper Commentary:

[Jan Scholz Talks About Training the Brain](#)

Article Title: Training induces changes in white-matter architecture

Authors: Scholz, J;Klein, MC;Behrens, TEJ;Johansen-Berg, H

Journal: NAT NEUROSCI

Volume: 12, Issue: 11, Page: 1370-1371, Year: NOV 2009

- * Oxford Ctr Funct Magnet Resonance Imaging Brain, Oxford, England.
- * Oxford Ctr Funct Magnet Resonance Imaging Brain, Oxford, England.
- * Univ Oxford, Dept Expt Psychol, Oxford OX1 3UD, England.

Field: Pharmacology & Toxicology

Article Title: How to improve R&D productivity: the pharmaceutical industry's grand challenge

Authors: Paul, SM;Mytelka, DS;Dunwiddie, CT;Persinger, CC;Munos, BH;Lindborg, SR;Schacht, AL

Journal: NAT REV DRUG DISCOV

Volume: 9, Issue: 3, Page: 203-214, Year: MAR 2010

* Eli Lilly & Co, Lilly Res Labs, Lilly Corp Ctr, Indianapolis, IN 46285 USA.

* Eli Lilly & Co, Lilly Res Labs, Lilly Corp Ctr, Indianapolis, IN 46285 USA.

Field: Physics

Article Title: On the extra mode and inconsistency of Horava gravity

Authors: Blas, D;Pujolas, O;Sibiryakov, S

Journal: J HIGH ENERGY PHYS

Volume: (10), Issue: , Page: :art., Year: no.-029 OCT 2009

* Ecole Polytech Fed Lausanne, FSB ITP LPPC, CH-1015 Lausanne, Switzerland.

* Ecole Polytech Fed Lausanne, FSB ITP LPPC, CH-1015 Lausanne, Switzerland.

* CERN, Div Theory, CH-1211 Geneva 23, Switzerland.

* Russian Acad Sci, Inst Nucl Res, Moscow 117312, Russia.



Field: Plant & Animal Science

New Hot Paper Commentary:

[Pamela Ronald on New Discoveries in Rice Research](#)

Article Title: A Type I-Secreted, Sulfated Peptide Triggers XA21-Mediated Innate Immunity

Authors: Lee, SW;Han, SW;Sririyanyum, M;Park, CJ;Seo, YS;Ronald, PC

Journal: SCIENCE

Volume: 326, Issue: 5954, Page: 850-853, Year: NOV 6 2009

* Univ Calif Davis, Dept Plant Pathol, Davis, CA 95616 USA.

* Univ Calif Davis, Dept Plant Pathol, Davis, CA 95616 USA.

Field: Psychiatry/Psychology

Article Title: A Placebo-Controlled, Fixed-Dose Study of Aripiprazole in Children and Adolescents With Irritability Associated With Autistic Disorder

Authors: Marcus, RN;Owen, R;Kamen, L;Manos, G;McQuade, RD;Carson, WH;Aman, MG

Journal: J AMER ACAD CHILD ADOLESC PSY

Volume: 48, Issue: 11, Page: 1110-1119, Year: NOV 2009

* Bristol Myers Squibb Co, 5 Res Pkwy, Wallingford, CT 06492 USA.

* Bristol Myers Squibb Co, Wallingford, CT 06492 USA.

* Ohio State Univ, Columbus, OH 43210 USA.

Field: Social Sciences, general

Article Title: Concept of energy conversion in engineering education

Authors: Demirbas, A

Journal: ENERGY EDUC SCI TECHNOL-PT B

Volume: 1, Issue: 3-4, Page: 183-197, Year: JUL-OCT 2009

* Sila Sci, Trabzon, Turkey.

* Sila Sci, Trabzon, Turkey.

Field: Space Science

Article Title: A super-Earth transiting a nearby low-mass star

Authors: Charbonneau, D;Berta, ZK;Irwin, J;Burke, CJ;Nutzman, P;Buchhave, LA;Lovis, C;Bonfils, X;Latham, DW;Udry, S;Murray-Clay, RA;Holman, MJ;Falco, EE;Winn, JN;Queloz, D;Pepe, F;Mayor, M;Delfosse, X;Forveille, T

Journal: NATURE

Volume: 462, Issue: 7275, Page: 891-894, Year: DEC 17 2009

* Harvard Smithsonian Ctr Astrophys, 60 Garden St, Cambridge, MA 02138 USA.

* Harvard Smithsonian Ctr Astrophys, Cambridge, MA 02138 USA.

* Univ Copenhagen, Niels Bohr Inst, DK-2100 Copenhagen, Denmark.

* Univ Geneva, Observ Geneva, CH-1290 Sauverny, Switzerland.

* Univ Grenoble 1, CNRS, UMR 5571, Lab Astrophys Grenoble LAOG, F-38041 Grenoble 09, France.

* MIT, Dept Phys, Kavli Inst Astrophys & Space Res, Cambridge, MA 02139 USA.

[EMAIL](#) | [BACK TO TOP ^](#)

CITE THIS PAGE: <http://sciencewatch.com/dr/nhp/2011/11marnhp/>

[New Hot Papers](#) » [2011](#) » [March 2011 - New Hot Papers](#)